

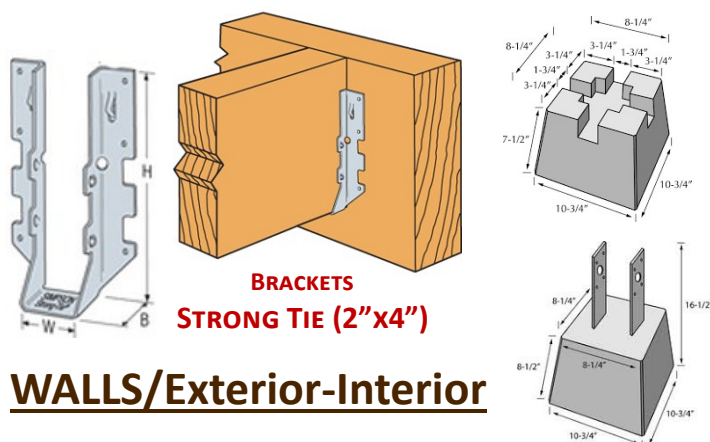
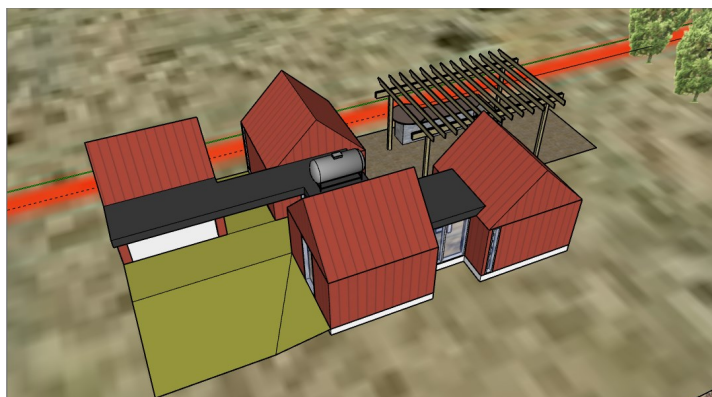
## ESTRELLA COMMUNITY RANCH

Snowflake, AZ

## BUILDING MATERIAL LIST

### Materials needed PER CABIN. 12'x12' each.

There is a Community Cabin Complex designed to host and house guests to the Ranch seeking to learn from visiting Tribal Elders from all over the world, whom will also reside within the complex in rotating seasons during their visits. The project will be open year-round, so we aim to provide amenities for all weather conditions that might become present, as most of our new campers will be from large urban cities that are not accustomed to life in the White Mountains/Desert. All donations are tax-deductible to the fullest extent allowed by the IRS.



### FOUNDATION/BASE FLOORING

#### PRESSURE TREATED LUMBER

(4"x4") x12' = 4

(2"x4") x 12 = 12

#### FLOOR BOARDS (4'x8')

3/4" Subfloor = 5

#### CEMENT/CONCRETE BLOCKS

7" Deck Block = 8

8" Pier (Dobie) Block = 4

8"x8"x16" Cinders = 8

#### BRACKETS/TIES

Strong Tie (2"x4") = 54

### WALLS/Exterior-Interior

#### WOOD STUD/FRAMING

(2"x4") x 8' = 80

(2"x4") x 12' = 10

(2"x6") x 12' = 1

#### HOUSE WRAP

(9'x150') Roll = 1

#### EXTERIOR SIDING PANELS

1/2" (4'x8') Plywood Sheets = 16

#### INTERIOR SIDING PANELS

1/2" (4'x8') Plywood Sheets = 15

#### CORNERS

9ft Corner Tracks = 20

### ROOFING (14'X16')

#### WOOD STUD/FRAMING

(2"x4") x 16' = 10

(2"x4") x 14' = 8

#### ROOFING (ROLLS)

Underlayment @ 48" Wide = 64 linear ft

Gravel barrier @ 36" Wide = 112 linear ft

Roofing adhesive = 1 gal.

#### PLYWOOD SHEATHING

3/4" (4'x8') Sheets = 8

#### BRACKETS/TIES

Strong Tie (2"x4") = 126

### FASTNERS

#### DESCRIPTION

#### SIZE

#### QTY

Framing/Wood Screws

3.5"

5lb Bucket

10D Hot Dipped Galvanized Nails

3.5"

5lb Bucket

Roofing Nails

1"

5lb Bucket

### INSULATION/PAINT

#### INSULATION ROLLS

23" R-16 (minimum) = 216 ft

#### PAINT/WEATHER TREATMENT

Stormcoat Exterior Paint = 5 gal.